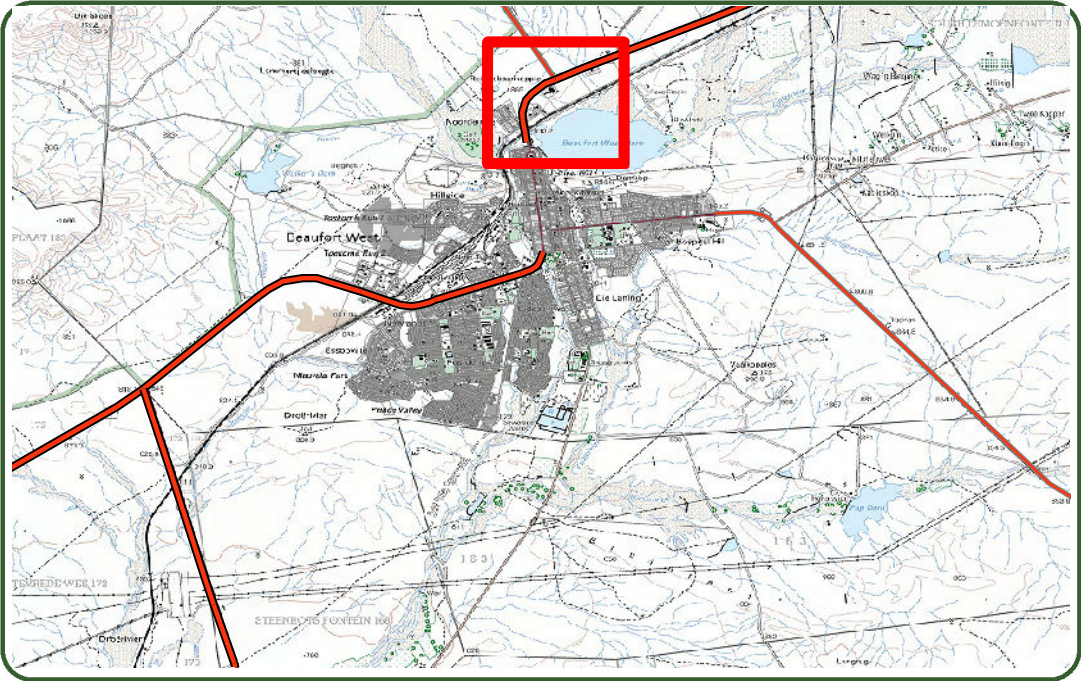






# Beaufort-West Approved LUS

Page: 1








## Beaufort-West LUS

### Zoning

-  SPLIT ZONING
-  AGRICULTURAL ZONE I (AZI)
-  AUTHORITY ZONE (AZ)
-  BUSINESS ZONE I (BZI)
-  BUSINESS ZONE II (BZII)
-  BUSINESS ZONE VI (BZVI)
-  COMMUNITY ZONE I (CZI)
-  GENERAL RESIDENTIAL ZONE II (GRZII)
-  GENERAL RESIDENTIAL ZONE IV (GRZIV)
-  INDUSTRIAL ZONE I (IZI)
-  RESORT ZONE (RZ)
-  SINGLE RESIDENTIAL ZONE I (SRZI)
-  TRANSPORT ZONE II (TZII)
-  UNDETERMINED ZONE (UNZ)

### Roads

-  HIGHWAY
-  ARTERIAL
-  SECONDARY
-  STREET
-  OTHER

## Document details

Final approved: 29 May 2020

## Disclaimer

The municipality acknowledges that these maps are part of a public engagement process, during which the information displayed here will be updated.

